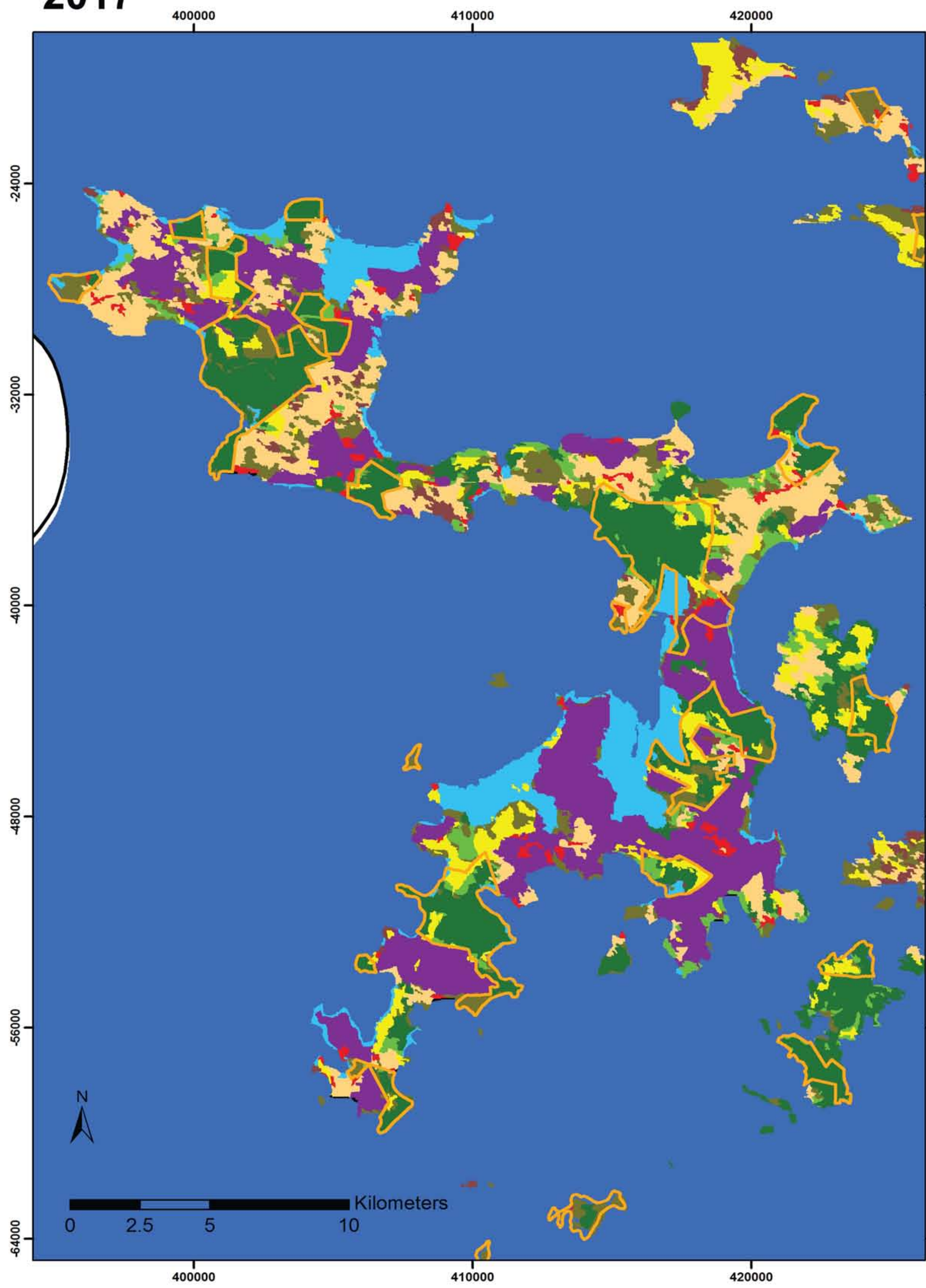


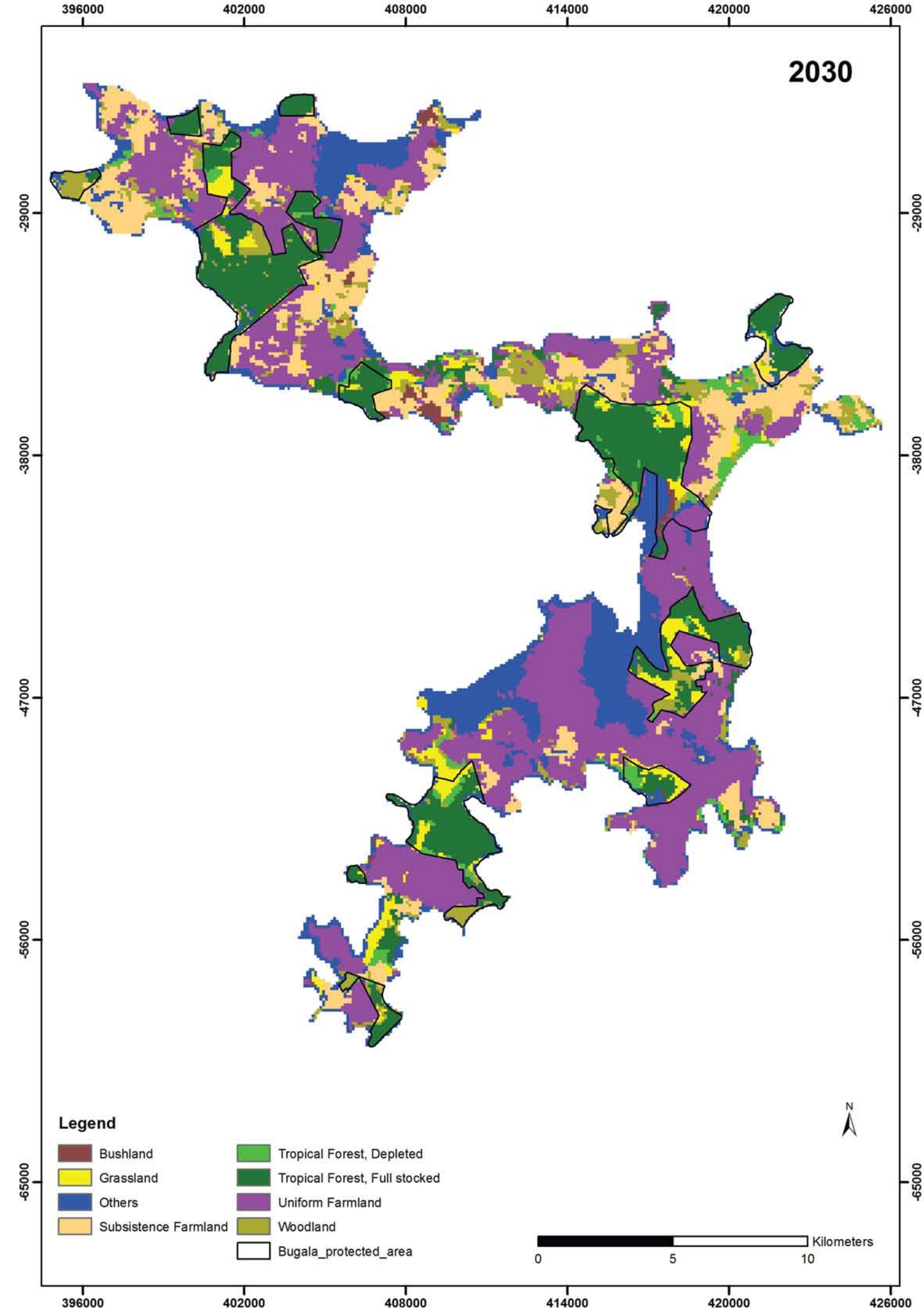
LAND COVER 2017 & PREDICTED LAND COVER 2030

BUGALA ISLAND, KALANGALA DISTRICT AND BUVUMA ISLAND, BUVUMA DISTRICT

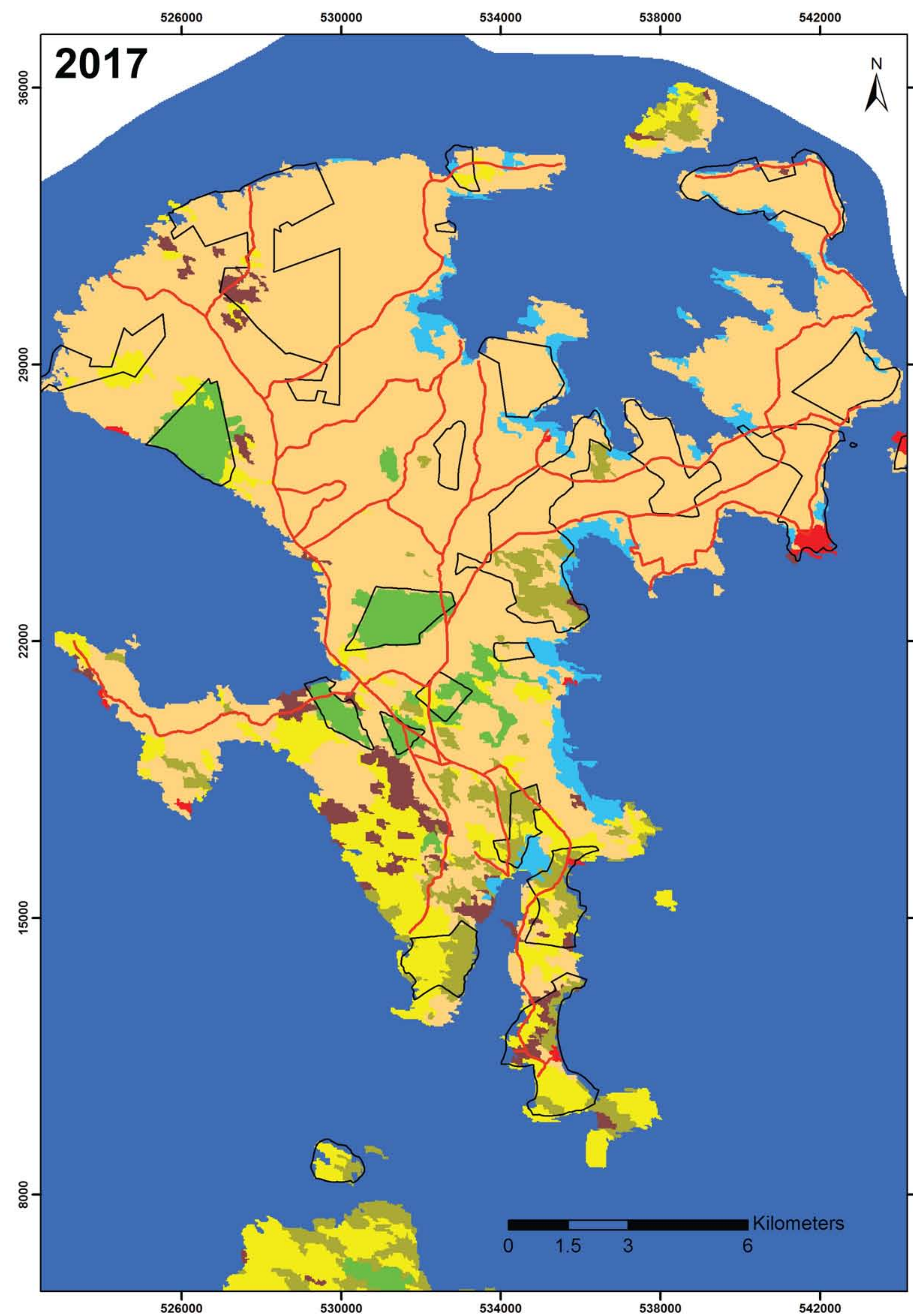
2017



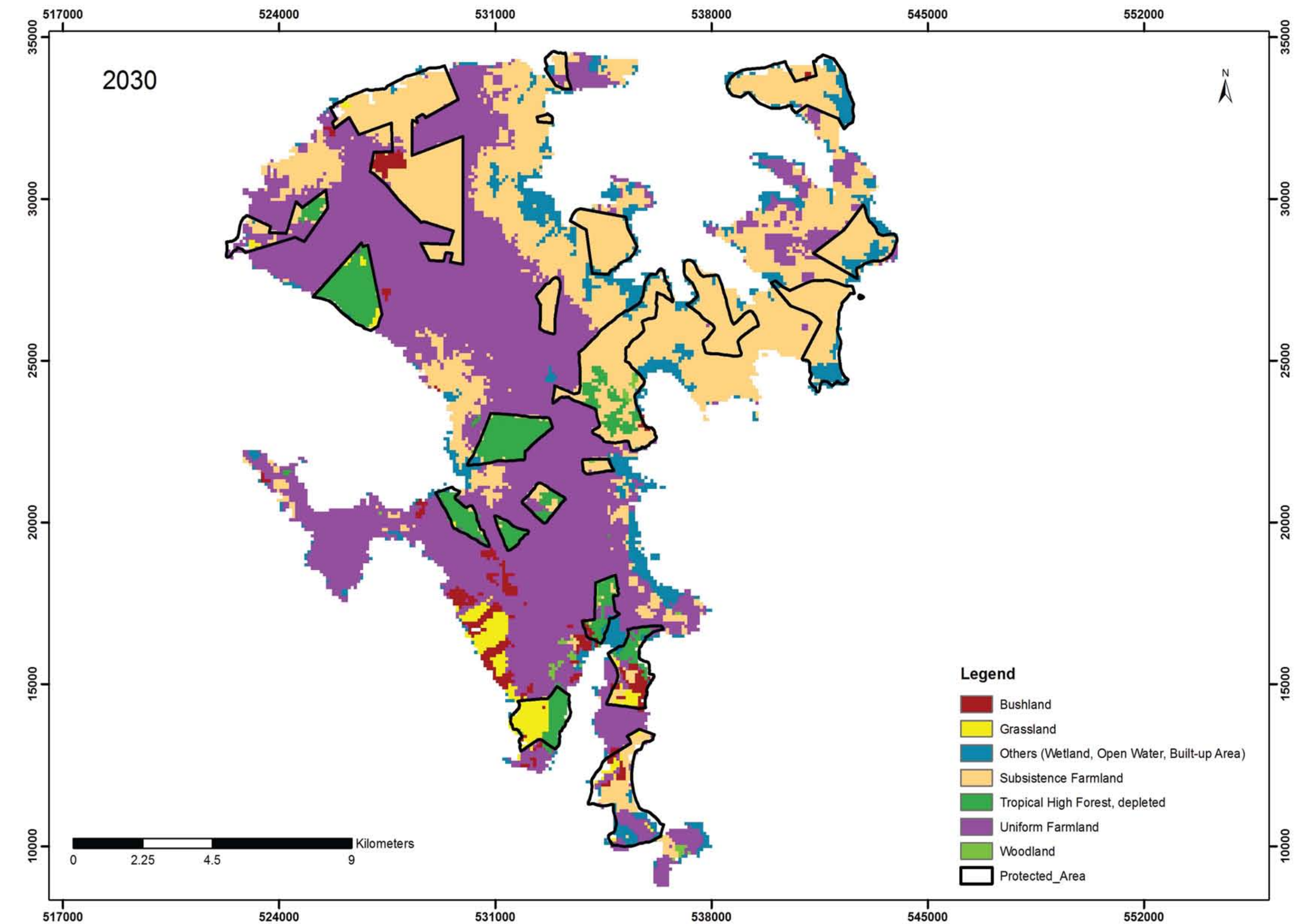
2030



2017



2030



Legend

- Bushland
- Grassland
- Impediments
- Open Water
- Subsistence Farmland
- Tropical High Forest, depleted
- Tropical High Forest, fully stocked
- Uniform Farmland
- Urban or built-up area
- Wetland
- Woodland
- Kalangala Protected Area

This map has been printed under the Green Livelihoods Alliance (GLA) Programme 'Forested landscapes for equity; with support from Tropenbos International.



Plot 23 JOFRA House,
Kiswa Bugolobi,
P. O. Box 29940 Kampala, Uganda
+256 414 666776
office@ecotrendsalliance.org
www.ecotrendsalliance.org



Visiting address: Lawickse Allee 11
6701 AN Wageningen (first floor)
Mailing address: Tropenbos International
P. O. Box 232
6700 AE Wageningen
The Netherlands
Contact: +31 317 702 020
tropenbos@tropenbos.org